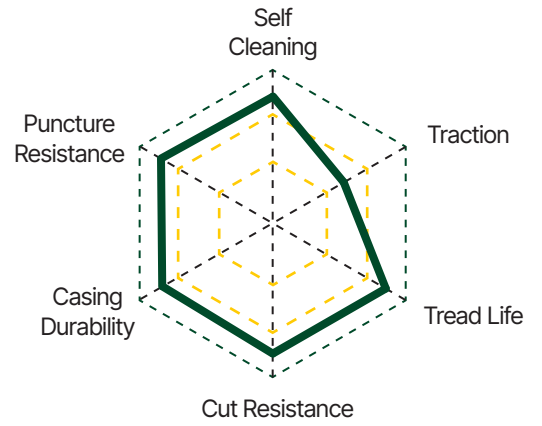


# CB790

L-5



**Super deep open tread pattern designed for wheel loader, dozer and grader requiring maximum traction**

**Optimised Retreading Ability because of the robust casing**



**Substantial crown and robust shoulders reinforced with a protection band make up a tyre**

**Additional protective sidewalls are shaped to minimize damage from cutting**

| Tyre Size | Star Rating | TRA Code | Service Index | Standard Rim | OD   |      | SW  |      | OTD |      | Inflated Pressure |     | Type |
|-----------|-------------|----------|---------------|--------------|------|------|-----|------|-----|------|-------------------|-----|------|
|           |             |          |               |              | mm   | inch | mm  | inch | mm  | 32ND | kPa               | PSI |      |
| 15.5 R25  | ★★          | L-5      | 176A2         | 12.00 / 1.3  | 1325 | 52   | 395 | 16   | 60  | 76   | 650               | 94  | TL   |
| 17.5 R25  | ★★          | L-5      | 182A2         | 14.00 / 2.5  | 1400 | 55   | 445 | 18   | 68  | 86   | 650               | 94  | TL   |
| 20.5 R25  | ★★          | L-5      | 193A2         | 17.00 / 2.0  | 1550 | 61   | 520 | 20   | 70  | 88   | 650               | 94  | TL   |
| 23.5 R25  | ★★          | L-5      | 201A2         | 19.50 / 2.5  | 1675 | 66   | 595 | 23   | 76  | 96   | 650               | 94  | TL   |
| 26.5 R25  | ★★          | L-5      | 209A2         | 22.00 / 3.0  | 1800 | 71   | 675 | 27   | 86  | 108  | 650               | 94  | TL   |
| 29.5 R25  | ★★          | L-5      | 216A2         | 25.00 / 3.5  | 1920 | 76   | 750 | 30   | 94  | 118  | 650               | 94  | TL   |
| 35/54R33  | ★★★         | L-5      | 224A2         | 28.00 / 3.5  | 2075 | 82   | 890 | 35   | 97  | 122  | 650               | 94  | TL   |
|           |             | L-5      | 229A2         |              |      |      |     |      |     |      | 800               | 116 |      |